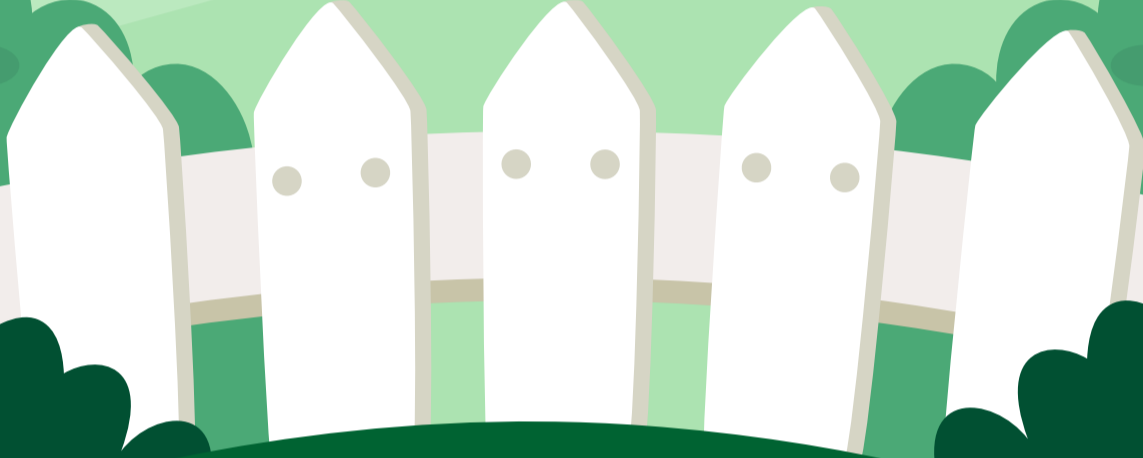


# The Benefits of **PROFESSIONAL LANDSCAPING SERVICES**

## for Commercial Properties

Enhancing the exterior appearance of your commercial property in Kensington, MD, goes beyond aesthetics—it can significantly impact your business's success and reputation. Professional **landscaping services** offer a range of advantages that extend well beyond curb appeal. Here's why investing in expert landscaping for your commercial property can be a game-changer:



### **POSITIVE FIRST IMPRESSIONS**

The external appearance of your business is often the first thing clients, customers, and partners see. A well-maintained and thoughtfully designed landscape conveys professionalism and care, creating a positive and lasting impression.



### **INCREASED PROPERTY VALUE**

A visually appealing landscape can increase the value of your commercial property. Quality landscaping demonstrates your commitment to maintaining the property and can potentially lead to higher resale or rental value in the future.



### **ENHANCED EMPLOYEE MORALE AND PRODUCTIVITY**

A well-designed outdoor space can contribute to a better work environment. Employees can enjoy breaks in a serene outdoor setting, boosting morale, reducing stress, and ultimately increasing productivity and job satisfaction.



### **ENVIRONMENTAL BENEFITS**

Professional landscapers can design eco-friendly landscapes that promote sustainability. Implementing native plants, efficient irrigation systems, and environmentally conscious practices not only benefit the environment but also resonate positively with environmentally conscious customers.

For top-tier commercial landscaping tailored to your specific needs, contact BAM'S Landscaping today and take the first step towards transforming your property into a thriving business asset. Calling or visiting, to learn how our expertise can elevate your commercial property's appeal and value!